

# DeltaMaster clicks!

## 11/2006

Greetings, fellow data analysts!

We often stress that analyzing means comparing. In essence, each analysis is a comparison, because you can only make a valid conclusion when you view your findings in the proper context. According to Merriam-Webster<sup>1</sup>, however, the word *analyze* also “suggests separating or distinguishing the component parts of something ... so as to discover its true nature or inner relationships” - in other words, searching! How true. How many times do we have to tear apart our data to view or explore one aspect after another until we finally find what we were looking for.

To ensure that we don't get lost in the data jungle, *DeltaMaster* offers a series of helpful devices that track and secure our steps for the course of our expedition. Just as Gretel had Hansel and he had his pebbles, we can rely on *DeltaMaster* with its views and history window. Everything you need to know about this feature is our focus of this edition of *clicks!*.

Sincerely,

Your Bissantz & Company team

### Review: Seminars in October

*Left:* Dr. Nicolas Bissantz and Professor Dr. Jörg Link at the “Gross Margin Flow and Variance Analysis” on October 17, 2006 in Nuremberg; *Center:* Professor Dr. Sven Piechota, Dr. Nicolas Bissantz, Markus Schmid and Dr. Rolf Bartke at the “Trends or Techniques?” executive seminar on October 26, 2006 at the Mercedes-Benz Classic Center, Stuttgart; *Right:* Tour of the old-timer restoration center.

### Advanced seminar in SQL, OLAP, MDX

Take part in our three-day seminar on building a data warehouse from December 12-14, 2006. The seminar agenda includes data preparation with SQL, OLAP modeling and MDX programming. A fourth day on December 15th will focus on the new features in Microsoft Analysis Services.  
[www.bissantz.de/olap-seminar](http://www.bissantz.de/olap-seminar)

### DeltaMaster Matinee

You're invited to our DeltaMaster Matinee on November 29, 2006 in the Maritim Rhein-Main Hotel in Darmstadt!  
[www.bissantz.de/matinee](http://www.bissantz.de/matinee)

### DeltaMaster@Work

Join us on November 30, 2006 in our Nuremberg office to get better acquainted with our solutions. To sign up for this free workshop, contact Mr. Liepins at [liepins@bissantz.de](mailto:liepins@bissantz.de).

### Archive

Download archived editions of *DeltaMaster clicks!* at [www.bissantz.de/clicks/en](http://www.bissantz.de/clicks/en).

<sup>1</sup> [www.merriam-webster.com/dictionary/analyze](http://www.merriam-webster.com/dictionary/analyze)

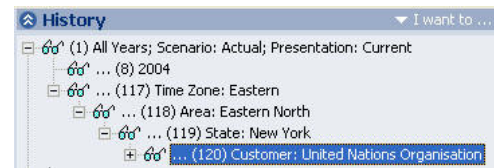


## Tip of the month Working with views

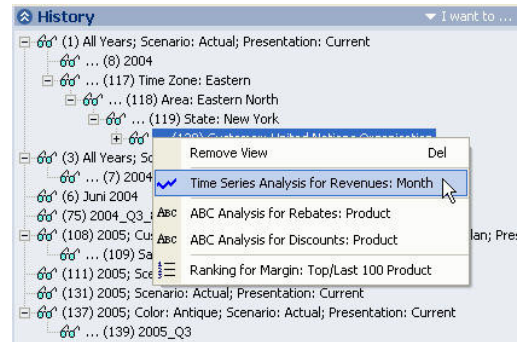
The two fundamental concepts in multidimensional data analysis are dimensions and measures. Dimensions contain members, most of which are grouped into hierarchies, are the criteria for analyzing your measures. From the *My View* window, you can select the criteria that should apply for cockpits and analyses. We call this combination of selected members a *View*.

### History

In *Miner* mode, *DeltaMaster* chronologically numbers and documents the views from your current session in the *History* box. You can easily return to a previous view at any time with a mouse click. The entire session is presented as a tree hierarchy. The underlying branches, which contain the same members as their parents, record the step-by-step changes.



You can remove the views that you no longer need in the context menu. Use this feature with caution, however, because this will delete all the reports with this view as well as any reports with views that branched from it. In addition, you can retrieve any analyses from the current session in the context menu. This allows you to quickly jump back to the view even if you did not save a report.



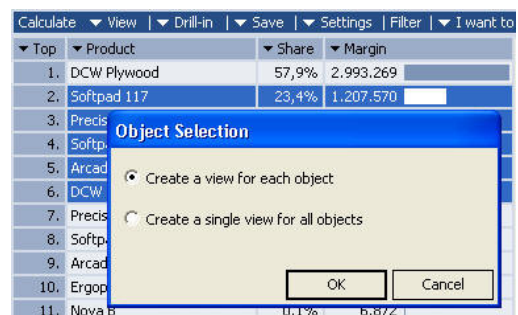
### Threaded Analysis Technology

One particularly interesting feature of *DeltaMaster* is the threaded analysis, which allows you to create new views based on the findings of your current analysis. The new views are then placed “on reserve” in the *History* window for later use.

Let’s assume that you have created the *Ranking* on your right to determine your top products with regards to margin. If you want to see why DCW Plywood is so dominant, simply do a double click to focus your view on your #1 product. But what if you want to view the runners-up, such as your top 2 through 6 with margin contributions over \$100,000?

Analysis Set	Calculate	View	Drill-in	Save	Settings	Filter	I want to
Base Methods	▼ Top	▼ Product	▼ Share	▼ Margin			
Ranking	1.	DCW Plywood	57,9%	2.993.269			
Cross Table Analysis	2.	Softpad 117	23,4%	1.207.570			
ABC Analysis	3.	Precisio LF	4,9%	250.767			
Time Series Analysis	4.	Softpad 217	4,5%	232.333			
Trumpet	5.	Arcade AM 44	2,5%	128.096			
Portfolio Analysis	6.	DCW Steel	2,0%	102.330			
Geo Analysis	7.	Precisio JK	1,4%	71.546			
SQL Drill Through	8.	Softpad 208	1,2%	60.236			
Movement Analysis	9.	Arcade AM 55	1,0%	52.746			
Statistical Methods	10.	Ergoplus Senso	0,9%	46.605			

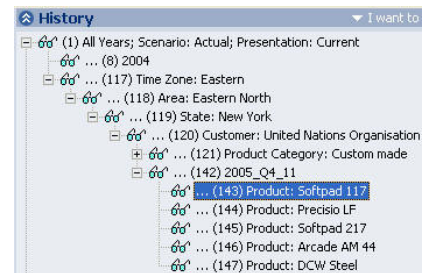
In this case, you simply mark the five products (holding the ALT key while clicking) and use the *Drill in Selected Objects* function from the *My Analysis* menu bar.



At this point, *DeltaMaster* asks if you want to *Create a view for each object* or *Create a single view for all objects*, which combines the 5 objects.

These two screenshots illustrate the difference:

- In the first case, *DeltaMaster* has prepared a separate view for each marked object in the *History* window.
- In the second example, *DeltaMaster* has created a combined view with the five objects (multiple selection). In this case, the desired measures will be aggregated for these products in the analyses and cockpits.



### Your view

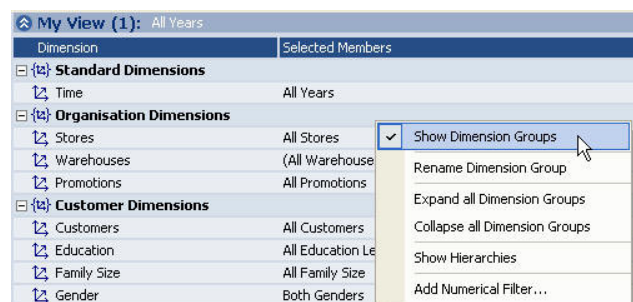
As already mentioned at the beginning of this issue, *My View* determines the criteria that you need for your current inquiry. This window posts a summary in the title bar, so you can get information about the current selection even when it is collapsed.

Occasionally, some dimension members in the *My View* window appear in parentheses or brackets. This signals that individual selections have been made in the current cockpit (parentheses) or analysis [brackets], and thus the current selection in the view is ignored. Here are two examples:

- You select the members that should be positioned on the axes of the pivot table. These are specifically for this cockpit and may differ from the members in your view. If the three main product groups, luxury, special and standard models, are included in the columns, the values for all three main groups will appear even if only one of these members or members on subordinate levels (e.g. individual articles) are selected in the view. If you want the columns and rows to correspond with the view, click the *Synchronize with Current View* button in the *Axis Definition*.
- If you want to examine the history of a given measure using *Time Series Analysis*, you can customize the settings for the levels (years, quarters, months, ...) as well as the beginning/end of the analysis. The time dimension members set in the *My View* window are then irrelevant, which is illustrated by the brackets.

It is helpful to organize models with a large number of dimensions into groups. Using the context menu, you can activate or deactivate the *Show Dimension Groups* feature.

By clicking the *Alt* key, you can drag and drop the dimensions between groups as well as sort your dimension list.

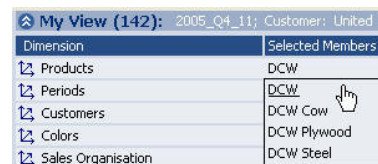


## Direct search

In *DeltaMaster* 5.1.7 and up, you can also use the direct search in the *My View* window. This function allows you to quickly select individual members without having to open the *Dimension Browser*.

Activate the *My View* window so the label in the title row turns dark blue. When you then place your mouse on a selected member in a dimension, you can immediately enter the name of the desired member from your keyboard. Alternatively, you can start a direct search by hitting *F3*, pressing the *Shift* key while clicking on the desired member or using the *Search Member* function in the context menu. Choose your preferred search method under *Extras/Options* in the *General* tab.

As soon as you click *Enter*, *DeltaMaster* searches the members of the affected dimension. If *DeltaMaster* only finds one member, it will select it automatically. If several objects fit the description, *DeltaMaster* will display them in a list from which you can select the appropriate member.

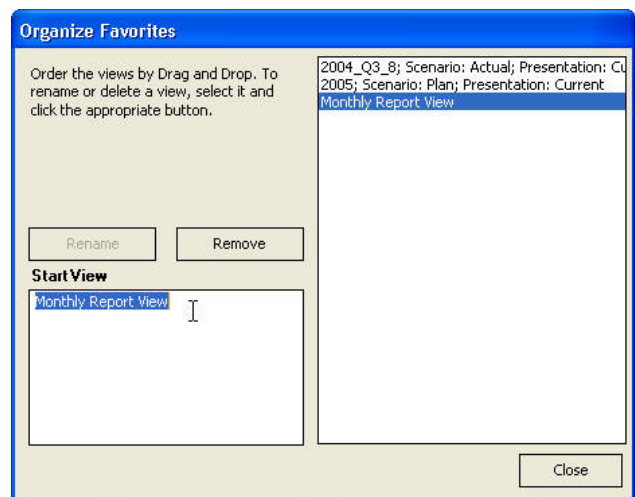


## Start View, Favorites

You can maintain your personal list of views under *Start View* and *Favorites*. This gives you quick and easy access to views that you need again and again for your daily work or specific tasks. This concept is very similar to the bookmark feature in Web browsers. Your *Favorites* as well as the functions to save and administer them are available in the *Start View* menu of the *My View* window.



If you want to restore a certain view, simply select the appropriate entry in the menu. When you click on *Start View* without opening the menu, *DeltaMaster* opens the first favorite from the list. To add new favorites, create the desired view and then click on the *Add to Favorites* option. *DeltaMaster* automatically names the new entry after the title bar of the window - including all of the selected members that are not top members and their respective dimension names. If the suggested name is too long for your taste, you can rename it by clicking the *Organize Favorites* command. This opens a dialog box where you can rename, sort (via drag and drop), and delete your favorites.



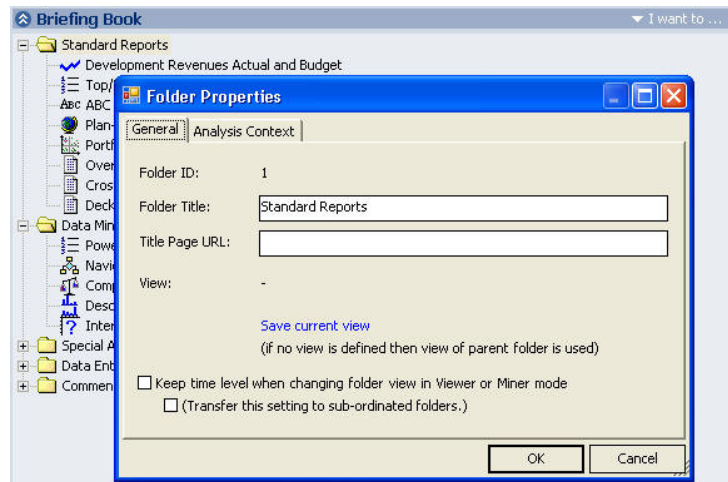
## Views in Folders

The favorites described above are particularly useful in cockpits. Since the results of your analyses are saved with a certain view in your briefing book, you do not have to manage the selected members manually. One last issue to clarify: Which view should be valid when a user clicks on a folder and not

on a report in the briefing book? This is especially important when distributing reports to users working in the *Viewer* mode. They often expect a “clean” book without big jumps between the objects.

For this purpose, you can set the view in the *Folder Properties* - either from the context menu of the appropriate folder (by saving the current view) or from *My View* → *Start View* → *Save View in Report Folder*.

The *Folder Properties* also determine the start view when a session is opened. After loading the .das file, *DeltaMaster* automatically selects the first folder in the *Briefing Book* and activates its view.

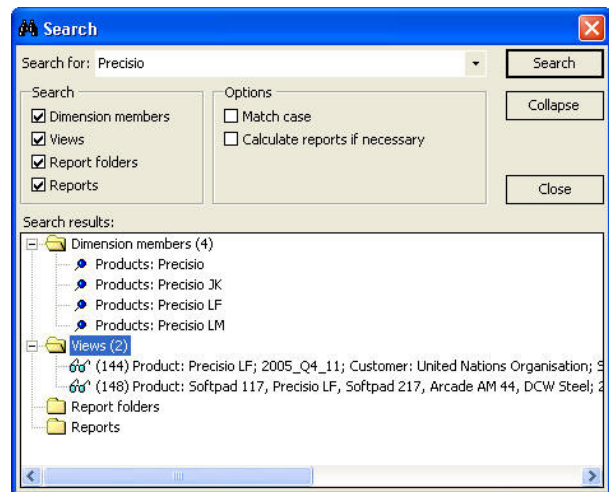


### Changing Views in Viewer Mode

*Miner* users should note that *DeltaMaster* reacts a bit differently in the *Viewer* mode. When a user changes the view while the folder in the *Briefing Book* is highlighted, this new view then applies to all reports in that folder.

### Searching Views

The search function, which is available in the *Edit* menu and as an input box in the top right corner of the *DeltaMaster* window, can also incorporate your saved views. This way you do not have to manually search through a combination of members in the history window to locate a certain member.



### Questions? Comments?

Just contact your Bissantz team for more information!